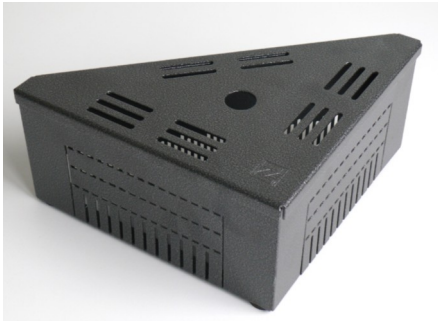


Inspection Chamber for Pitched Roofs SKS 12



Inspection chamber for protection and inspection of roof outlets for steep pitched roofs with Georaster®-Elements. Photograph shows the perforated sides.

Technical Data

Inspection Chamber for Pitched Roofs SKS 12

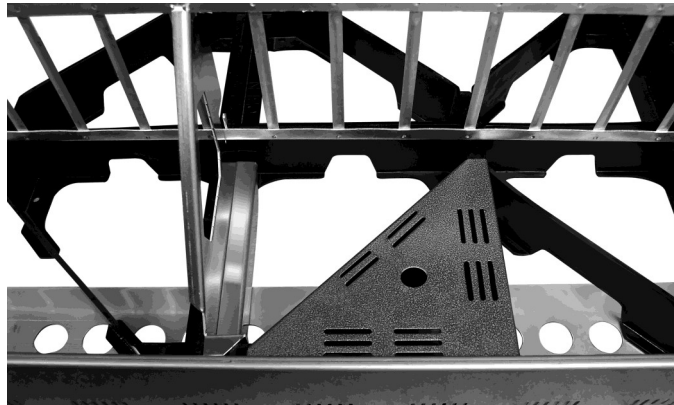
Made of galvanized, plastic coated steel with lateral slots for water drainage. Designed for the system build-up "Steep Pitched Green Roof" with Georaster®-Elements with a standing flange towards the inner side. Two sides are perforated to allow easy adjustment according to site specific requirements without tools. Removable lid, walkable, with drainage slots according to German FLL Green Roofing Guideline.

Colour:	old silver-antique
Height:	ca. 120 mm
Outer dimension of the Chamber:	ca. 240 x 240 x 330 mm
Aperture dimension:	ca. 200 x 200 x 280 mm
Weight:	ca. 1.5 kg

Features

- designed specifically for use with Georaster®-Elements
- for use with internal water outlets
- walkable, corrosion resistant
- with lateral slots and adjustable sides

Application Example



Specification Suggestion

Inspection chamber, galvanized and plastic coated steel, removable and walkable lid, height ca. 120 mm, outer dimensions designed to suit Georaster®-elements, weight ca. 1.5 kg, lateral slots according to German DIN 1986; Lid according to German FLL Green Roofing

Guideline, delivery and installation above water outlet.

Make: ZinCo Inspection Chamber for Steep Pitched Roofs SKS 12
Enquiries: ZinCo GmbH,
Phone: +49 7022 6003-0